

Patient outcomes

	✓	N	Result
Date ready for care to episode start			
Day of/day after	5506	5676	97.0%
Time in unstable phase			
Three days or less	2479	2792	88.8%

Symptoms & problems

Anticipatory Care

Pain PCPSS	8027	8905	90.1%
Pain SAS	6968	7751	89.9%
Fatigue	7654	8246	92.8%
Breathing problems	8316	8747	95.1%
Family/carer	8502	9221	92.2%

Responsive Care

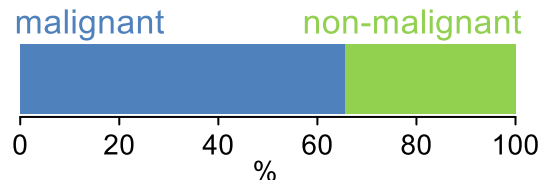
Pain PCPSS	1399	1974	70.9%
Pain SAS	1323	2005	66.0%
Fatigue	974	1466	66.4%
Breathing problems	644	986	65.3%
Family/carer	952	1481	64.3%

Casemix adjusted outcomes

Pain PCPSS	10879	0.09
Other symptoms	10875	0.25
Family/carer	10702	0.20
Psychological/spiritual	10839	0.21
Pain SAS	9756	0.29
Nausea	9717	0.16
Breathing problems	9733	0.28
Bowel problems	9729	0.28

✓ = Positive outcomes N = Total outcomes

Diagnosis

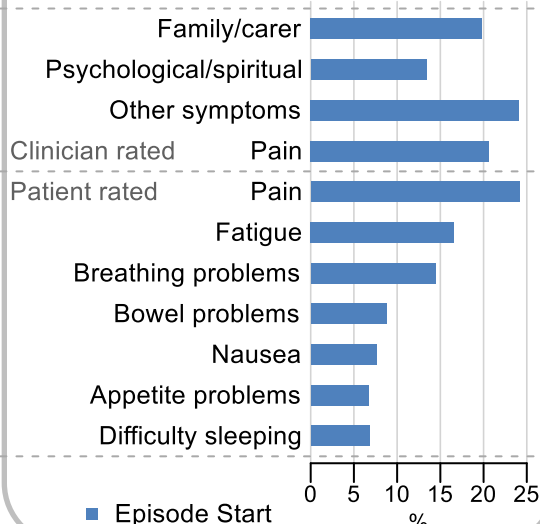


Age at episode start

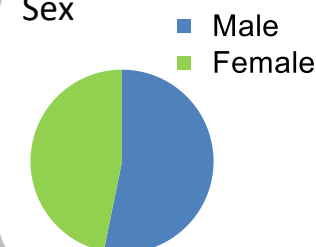
Mean: **75.4**
Median: **77.0**

Symptoms & problems

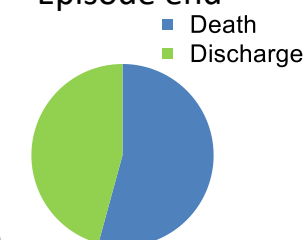
proportion of moderate / severe scores



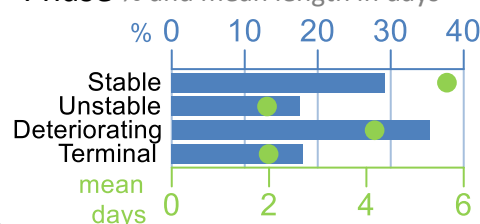
Sex



Episode end



Phase % and mean length in days

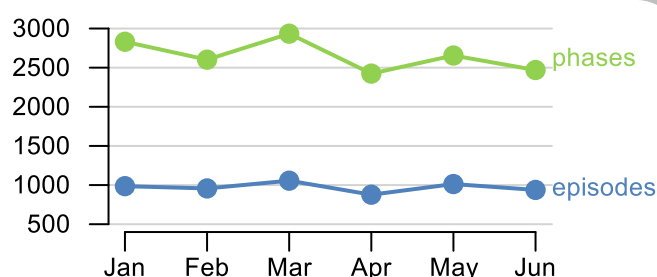


Phases per episode

2.5

Volume of data

Patients: **5,413**
Episodes: **6,133**
Phases: **15,916**



Episode length in days

Mean: **9.8**
Median: **6.0**