

## Patient outcomes

	✓	N	Result
Date ready for care to episode start			
Day of/day after	4666	4709	99.1%
Time in unstable phase			
Three days or less	1112	1276	87.1%

## Symptoms & problems

### Anticipatory Care

Pain PCPSS	3970	4335	91.6%
Pain SAS	3029	3364	90.0%
Fatigue	2710	3014	89.9%
Breathing problems	3542	3709	95.5%
Family/carer	4407	4660	94.6%

### Responsive Care

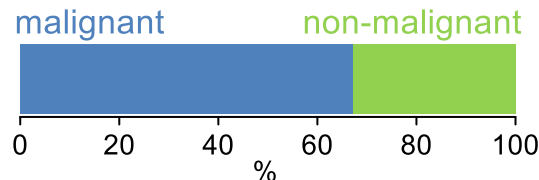
Pain PCPSS	750	1159	64.7%
Pain SAS	578	985	58.7%
Fatigue	616	1319	46.7%
Breathing problems	327	627	52.2%
Family/carer	338	624	54.2%

## Casemix adjusted outcomes

Pain PCPSS	5494	0.07
Other symptoms	5403	0.24
Family/carer	5284	0.22
Psychological/spiritual	5389	0.20
Pain SAS	4349	0.26
Nausea	4325	0.20
Breathing problems	4336	0.30
Bowel problems	4305	0.25

✓ = Positive outcomes N = Total outcomes

## Diagnosis

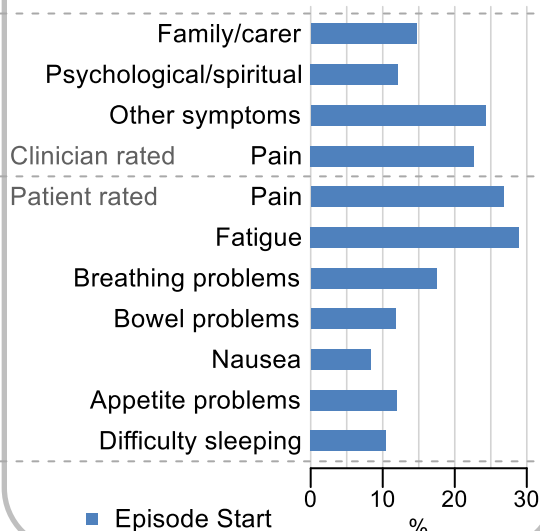


## Age at episode start

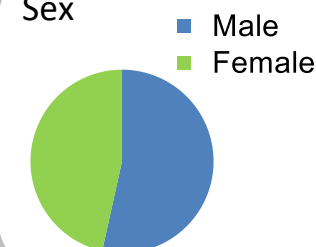
Mean: **73.1**  
Median: **75.0**

## Symptoms & problems

proportion of moderate / severe scores



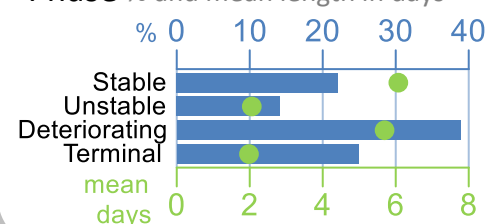
## Sex



## Episode end



## Phase % and mean length in days

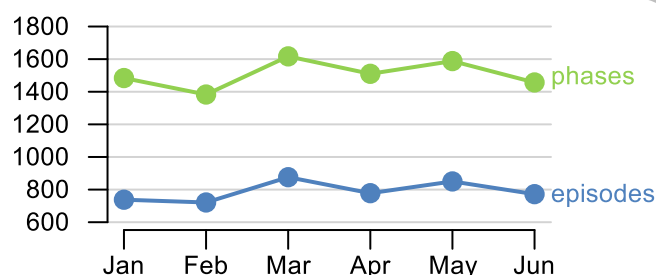


## Phases per episode

**1.9**

## Volume of data

Patients: **4,092**  
Episodes: **4,793**  
Phases: **9,039**



## Episode length in days

Mean: **8.2**  
Median: **4.0**