

## Patient outcomes

	✓	N	Result
Date ready for care to episode start			
Day of/day after	1790	2019	88.7%
Time in unstable phase			
Three days or less	440	550	80.0%

## Symptoms & problems

### Anticipatory Care

Pain PCPSS	1958	2392	81.9%
Pain SAS	1813	2206	82.2%
Fatigue	1668	2001	83.4%
Breathing problems	2173	2390	90.9%
Family/carer	1916	2331	82.2%

### Responsive Care

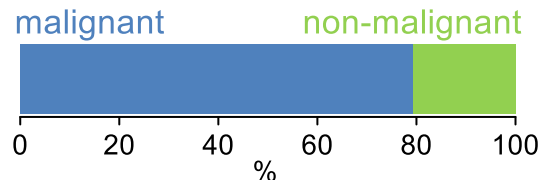
Pain PCPSS	356	745	47.8%
Pain SAS	350	772	45.3%
Fatigue	399	919	43.4%
Breathing problems	227	481	47.2%
Family/carer	286	631	45.3%

## Casemix adjusted outcomes

Pain PCPSS	3137	-0.19
Other symptoms	3141	-0.08
Family/carer	2962	-0.05
Psychological/spiritual	3072	-0.06
Pain SAS	2978	-0.39
Nausea	2906	-0.10
Breathing problems	2871	-0.09
Bowel problems	2891	-0.11

✓ = Positive outcomes N = Total outcomes

## Diagnosis

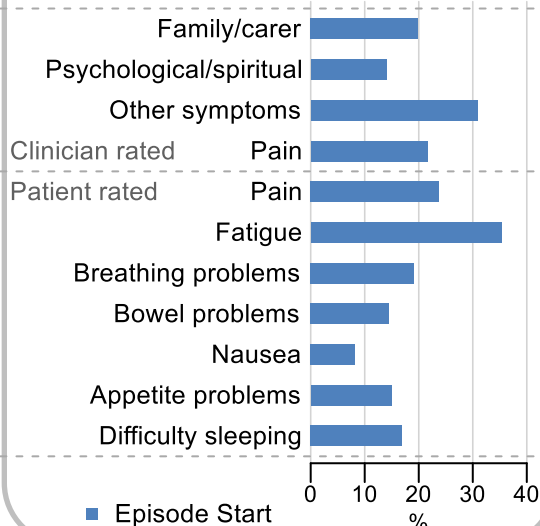


## Age at episode start

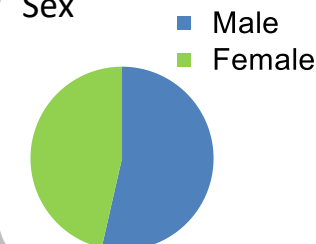
Mean: **73.3**  
Median: **75.0**

## Symptoms & problems

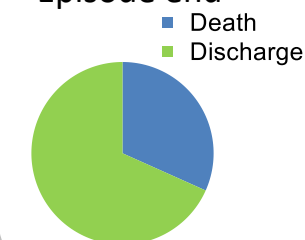
proportion of moderate / severe scores



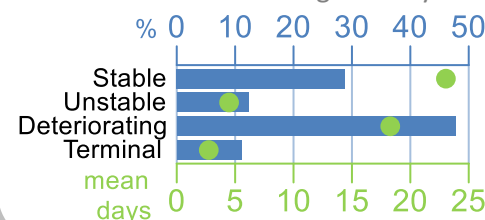
## Sex



## Episode end



## Phase % and mean length in days

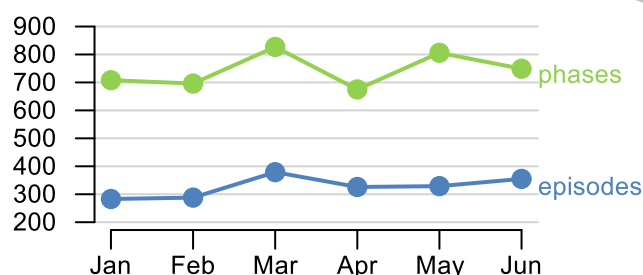


## Phases per episode

**1.9**

## Volume of data

Patients: **2,089**  
Episodes: **2,320**  
Phases: **4,461**



## Episode length in days

Mean: **38.6**  
Median: **26.0**