

Patient outcomes

| | ✓ | N | Result |
|--------------------------------------|-----|-----|--------|
| Date ready for care to episode start | | | |
| Day of/day after | 947 | 974 | 97.2% |
| Time in unstable phase | | | |
| Three days or less | 121 | 143 | 84.6% |

Symptoms & problems

Anticipatory Care

| | | | |
|--------------------|-----|-----|-------|
| Pain PCPSS | 733 | 830 | 88.3% |
| Pain SAS | 654 | 737 | 88.7% |
| Fatigue | 690 | 747 | 92.4% |
| Breathing problems | 785 | 828 | 94.8% |
| Family/carer | 709 | 775 | 91.5% |

Responsive Care

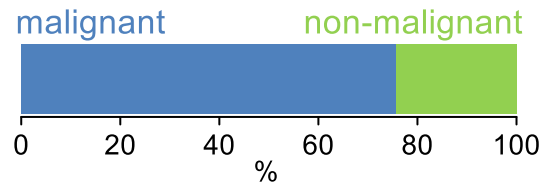
| | | | |
|--------------------|-----|-----|-------|
| Pain PCPSS | 123 | 222 | 55.4% |
| Pain SAS | 138 | 263 | 52.5% |
| Fatigue | 126 | 216 | 58.3% |
| Breathing problems | 81 | 143 | 56.6% |
| Family/carer | 56 | 109 | 51.4% |

Casemix adjusted outcomes

| | | |
|-------------------------|------|-------|
| Pain PCPSS | 1052 | -0.03 |
| Other symptoms | 1035 | 0.21 |
| Family/carer | 884 | 0.15 |
| Psychological/spiritual | 1038 | 0.21 |
| Pain SAS | 1000 | 0.06 |
| Nausea | 960 | 0.21 |
| Breathing problems | 971 | 0.27 |
| Bowel problems | 931 | 0.30 |

✓ = Positive outcomes N = Total outcomes

Diagnosis

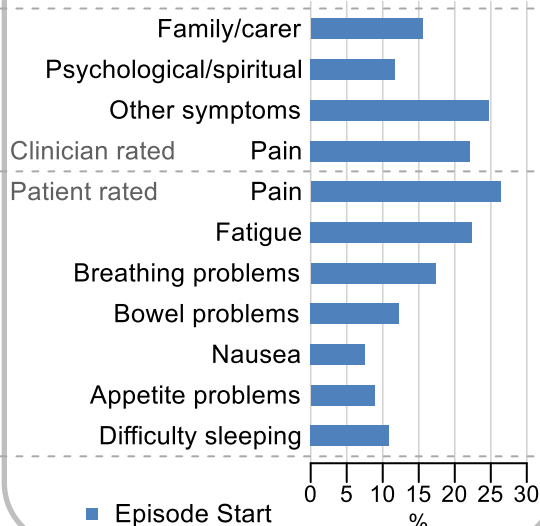


Age at episode start

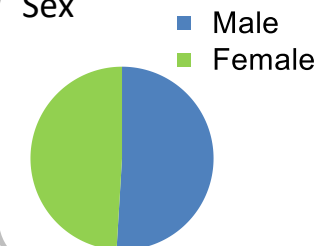
Mean: **73.4**
Median: **75.0**

Symptoms & problems

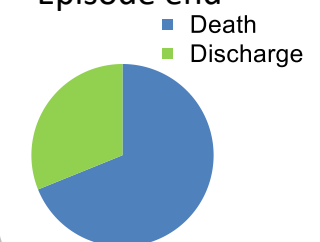
proportion of moderate / severe scores



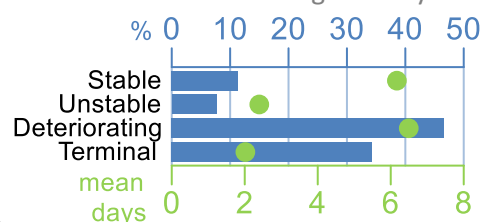
Sex



Episode end



Phase % and mean length in days

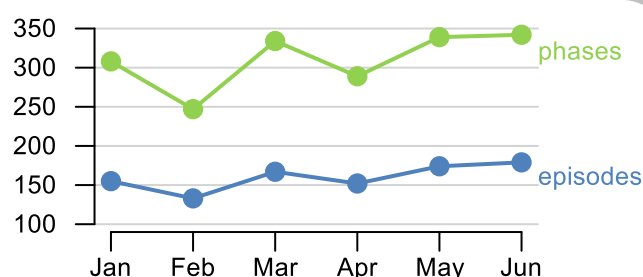


Phases per episode

1.9

Volume of data

Patients: **840**
Episodes: **986**
Phases: **1,859**



Episode length in days

Mean: **9.0**
Median: **5.0**