

Patient outcomes

	✓	N	Result
Date ready for care to episode start			
Day of/day after	22950	23651	97.0%
Time in unstable phase			
Three days or less	6050	6605	91.6%

Symptoms & problems

Anticipatory Care

Pain PCPSS	26593	29032	91.6%
Pain SAS	22210	24523	90.6%
Fatigue	23480	25259	93.0%
Breathing problems	26539	27702	95.8%
Family/carer	25690	27561	93.2%

Responsive Care

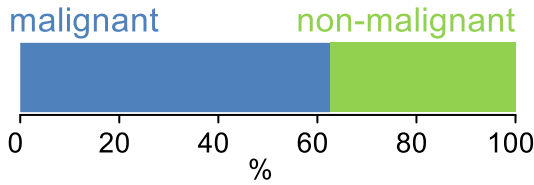
Pain PCPSS	3973	6263	63.4%
Pain SAS	3870	6619	58.5%
Fatigue	3306	5806	56.9%
Breathing problems	1959	3454	56.7%
Family/carer	2161	3648	59.2%

Casemix adjusted outcomes

Pain PCPSS	35295	0.09	
Other symptoms	35126	0.26	
Family/carer	31209	0.22	
Psychological/spiritual	34895	0.23	
Pain SAS	31142	0.26	
Nausea	31103	0.20	
Breathing problems	31156	0.29	
Bowel problems	31016	0.29	

✓ = Positive outcomes N = Total outcomes

Diagnosis

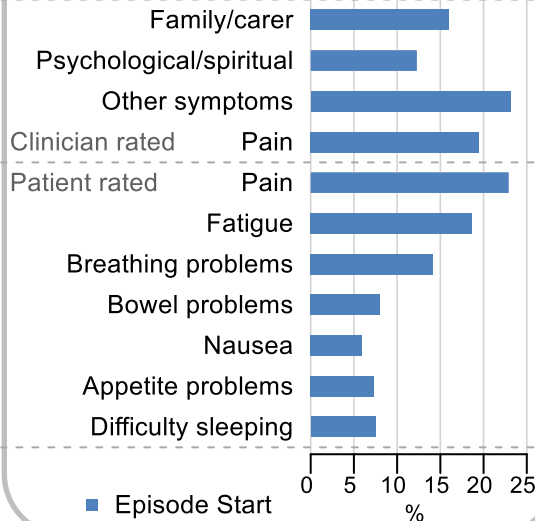


Age at episode start

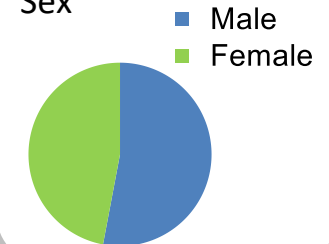
Mean: **74.8**
Median: **77.0**

Symptoms & problems

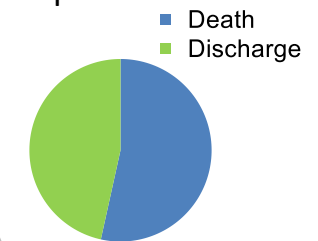
proportion of moderate / severe scores



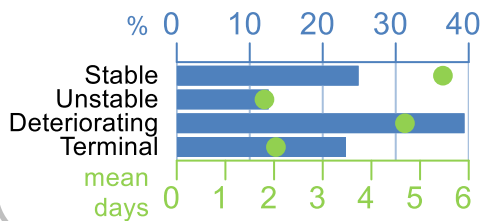
Sex



Episode end



Phase % and mean length in days



Phases per episode

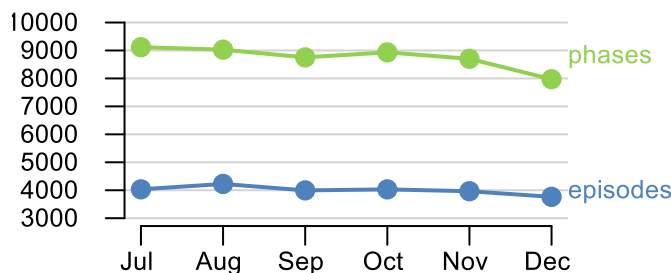
2.1

Volume of data

Patients: **20,475**

Episodes: **24,512**

Phases: **52,507**



Episode length in days

Mean: **8.4**

Median: **4.0**

