

## Patient outcomes

	✓	N	Result
Date ready for care to episode start			
Day of/day after	17605	20194	87.2%
Time in unstable phase			
Three days or less	4032	4868	82.8%

## Symptoms & problems

### Anticipatory Care

Pain PCPSS	26127	30497	85.7%
Pain SAS	24713	29172	84.7%
Fatigue	21781	26210	83.1%
Breathing problems	28495	30729	92.7%
Family/carer	23141	27586	83.9%

### Responsive Care

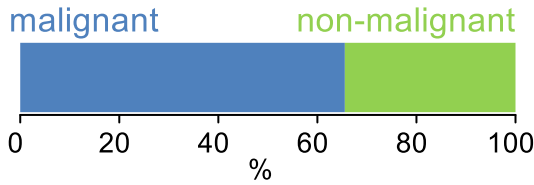
Pain PCPSS	3789	6386	59.3%
Pain SAS	4025	7271	55.4%
Fatigue	4302	8836	48.7%
Breathing problems	2040	4114	49.6%
Family/carer	3218	6302	51.1%

## Casemix adjusted outcomes

Pain PCPSS	36883	-0.04
Other symptoms	35963	0.03
Family/carer	33888	0.04
Psychological/spiritual	36062	0.05
Pain SAS	36443	-0.08
Nausea	34915	0.01
Breathing problems	34843	0.07
Bowel problems	34385	0.07

✓ = Positive outcomes    N = Total outcomes

## Diagnosis

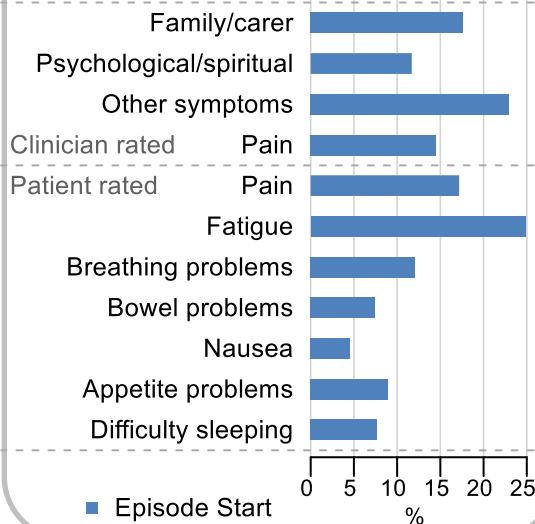


## Age at episode start

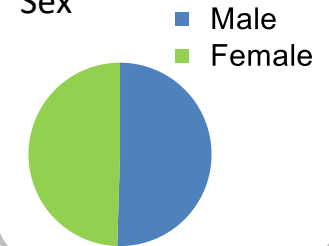
Mean: **76.1**  
Median: **78.0**

## Symptoms & problems

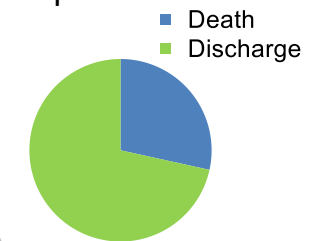
proportion of moderate / severe scores



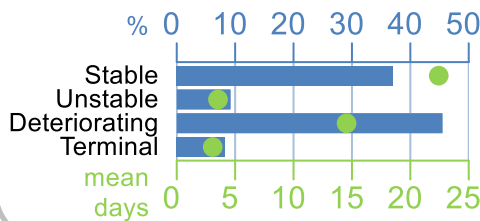
## Sex



## Episode end



## Phase % and mean length in days

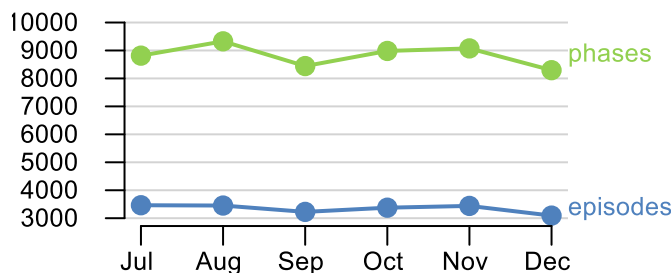


## Phases per episode

**2.1**

## Volume of data

Patients: **20,196**  
Episodes: **24,059**  
Phases: **52,937**



## Episode length in days

Mean: **39.3**  
Median: **29.0**

