

Patient outcomes

	✓	N	Result
Date ready for care to episode start			
Day of/day after	4668	4699	99.3%
Time in unstable phase			
Three days or less	1045	1186	88.1%

Symptoms & problems

Anticipatory Care

Pain PCPSS	3916	4324	90.6%
Pain SAS	2879	3257	88.4%
Fatigue	2803	3124	89.7%
Breathing problems	3688	3861	95.5%
Family/carer	4163	4461	93.3%

Responsive Care

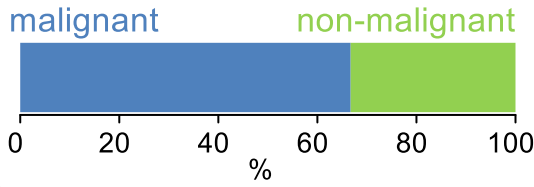
Pain PCPSS	697	1097	63.5%
Pain SAS	638	1190	53.6%
Fatigue	612	1324	46.2%
Breathing problems	312	584	53.4%
Family/carer	331	592	55.9%

Casemix adjusted outcomes

Pain PCPSS	5421	0.03
Other symptoms	5282	0.22
Family/carer	5053	0.19
Psychological/spiritual	5267	0.20
Pain SAS	4447	0.17
Nausea	4445	0.24
Breathing problems	4445	0.28
Bowel problems	4442	0.23

✓ = Positive outcomes N = Total outcomes

Diagnosis

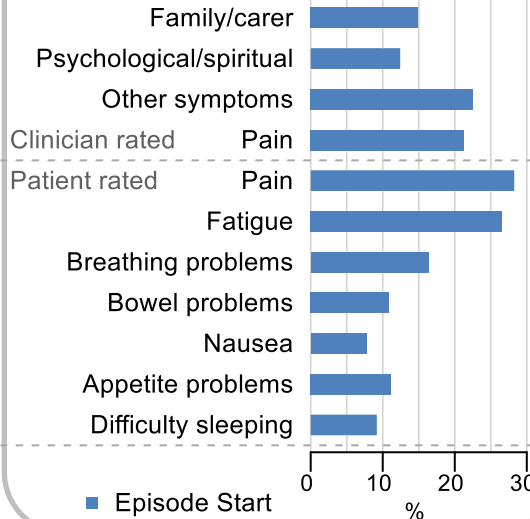


Age at episode start

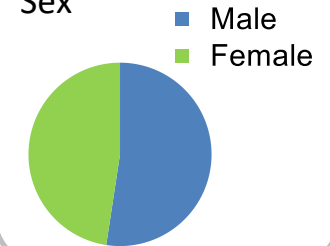
Mean: **73.2**
Median: **75.0**

Symptoms & problems

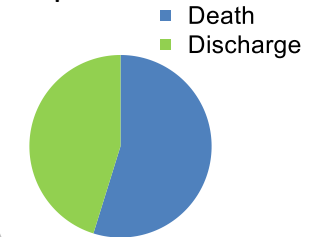
proportion of moderate / severe scores



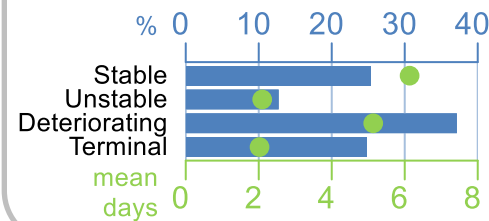
Sex



Episode end



Phase % and mean length in days

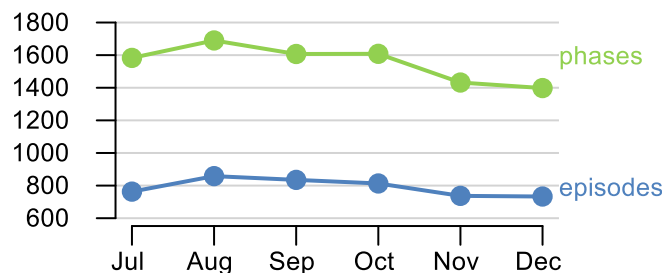


Phases per episode

1.9

Volume of data

Patients: **4,015**
Episodes: **4,803**
Phases: **9,318**



Episode length in days

Mean: **8.5**
Median: **4.0**

