

Patient outcomes

	✓	N	Result
Date ready for care to episode start			
Day of/day after	2731	3256	83.9%
Time in unstable phase			
Three days or less	468	732	63.9%

Symptoms & problems

Anticipatory Care

Pain PCPSS	3207	3605	89.0%
Pain SAS	2586	3052	84.7%
Fatigue	2196	2582	85.1%
Breathing problems	3213	3443	93.3%
Family/carer	2989	3419	87.4%

Responsive Care

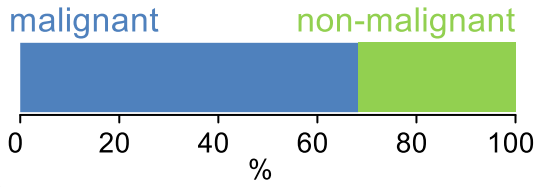
Pain PCPSS	351	776	45.2%
Pain SAS	428	1067	40.1%
Fatigue	357	1480	24.1%
Breathing problems	199	618	32.2%
Family/carer	291	778	37.4%

Casemix adjusted outcomes

Pain PCPSS	4381	-0.07
Other symptoms	4312	0.03
Family/carer	4197	0.03
Psychological/spiritual	4349	0.06
Pain SAS	4119	-0.27
Nausea	4069	-0.10
Breathing problems	4061	-0.02
Bowel problems	3982	-0.08

✓ = Positive outcomes N = Total outcomes

Diagnosis

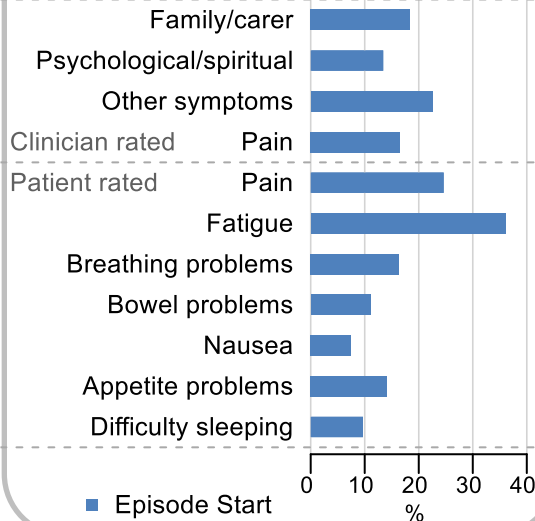


Age at episode start

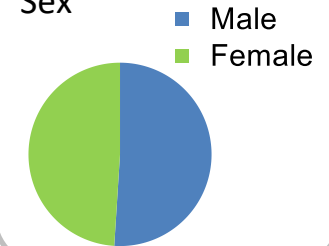
Mean: **75.4**
Median: **77.0**

Symptoms & problems

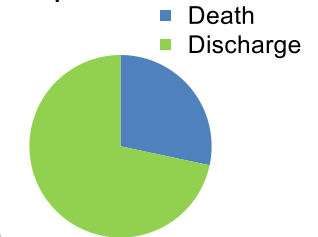
proportion of moderate / severe scores



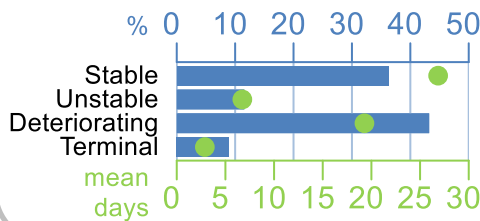
Sex



Episode end



Phase % and mean length in days

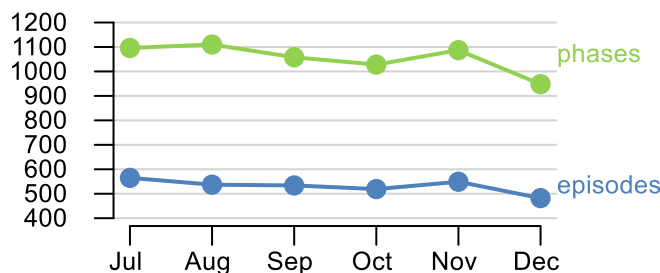


Phases per episode

1.6

Volume of data

Patients: **3,290**
Episodes: **3,655**
Phases: **6,327**



Episode length in days

Mean: **40.7**
Median: **30.0**

