

Patient outcomes

	✓	N	Result
Date ready for care to episode start			
Day of/day after	1286	1333	96.5%
Time in unstable phase			
Three days or less	413	468	88.2%

Symptoms & problems

Anticipatory Care

Pain PCPSS	1156	1306	88.5%
Pain SAS	1069	1200	89.1%
Fatigue	1099	1197	91.8%
Breathing problems	1285	1338	96.0%
Family/carer	1140	1259	90.5%

Responsive Care

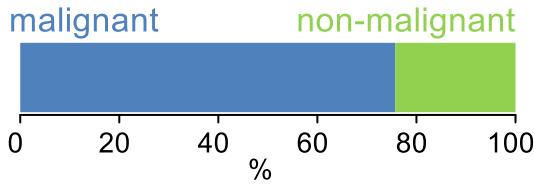
Pain PCPSS	180	324	55.6%
Pain SAS	197	334	59.0%
Fatigue	206	310	66.5%
Breathing problems	104	196	53.1%
Family/carer	78	155	50.3%

Casemix adjusted outcomes

Pain PCPSS	1630	-0.06
Other symptoms	1627	0.19
Family/carer	1414	0.16
Psychological/spiritual	1597	0.24
Pain SAS	1534	0.02
Nausea	1509	0.23
Breathing problems	1534	0.27
Bowel problems	1480	0.29

✓ = Positive outcomes N = Total outcomes

Diagnosis

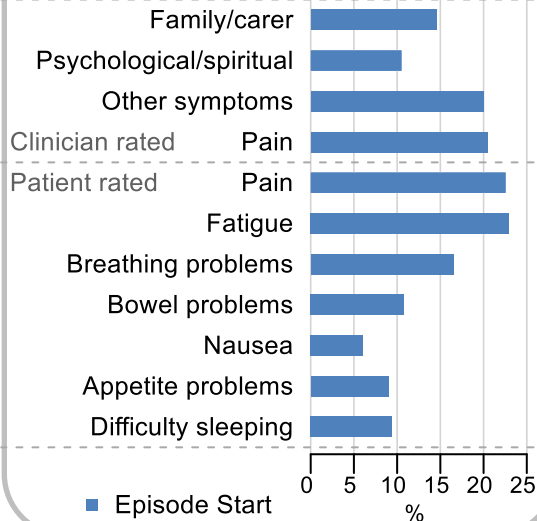


Age at episode start

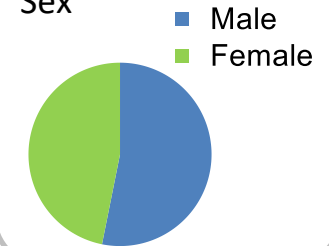
Mean: **73.5**
Median: **75.0**

Symptoms & problems

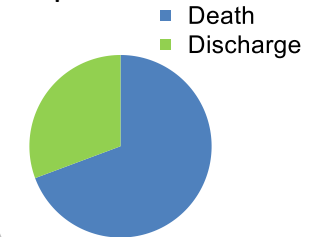
proportion of moderate / severe scores



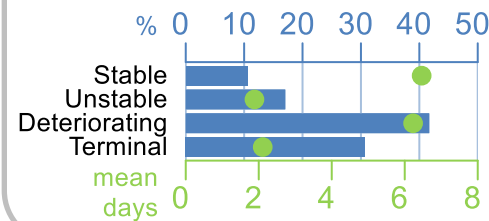
Sex



Episode end



Phase % and mean length in days

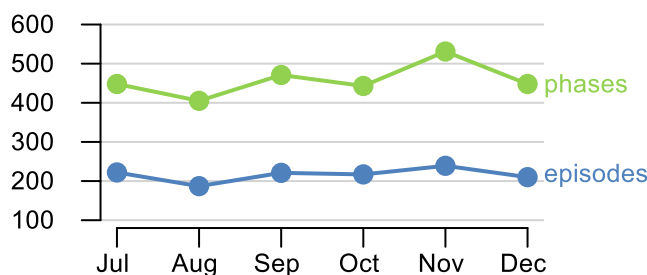


Phases per episode

2.0

Volume of data

Patients: **1,125**
Episodes: **1,353**
Phases: **2,746**



Episode length in days

Mean: **9.1**
Median: **5.0**

