

Patient outcomes

	✓	N	Result
Date ready for care to episode start			
Day of/day after	1957	2119	92.4%
Time in unstable phase			
Three days or less	435	524	83.0%

Symptoms & problems

Anticipatory Care

Pain PCPSS	2009	2395	83.9%
Pain SAS	2003	2349	85.3%
Fatigue	1677	2056	81.6%
Breathing problems	2254	2471	91.2%
Family/carer	1873	2328	80.5%

Responsive Care

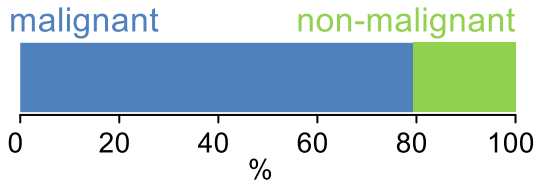
Pain PCPSS	377	736	51.2%
Pain SAS	346	713	48.5%
Fatigue	425	945	45.0%
Breathing problems	209	510	41.0%
Family/carer	261	640	40.8%

Casemix adjusted outcomes

Pain PCPSS	3131	-0.17
Other symptoms	3127	-0.09
Family/carer	2968	-0.08
Psychological/spiritual	3091	-0.09
Pain SAS	3062	-0.27
Nausea	3002	-0.09
Breathing problems	2981	-0.14
Bowel problems	2984	-0.09

✓ = Positive outcomes N = Total outcomes

Diagnosis

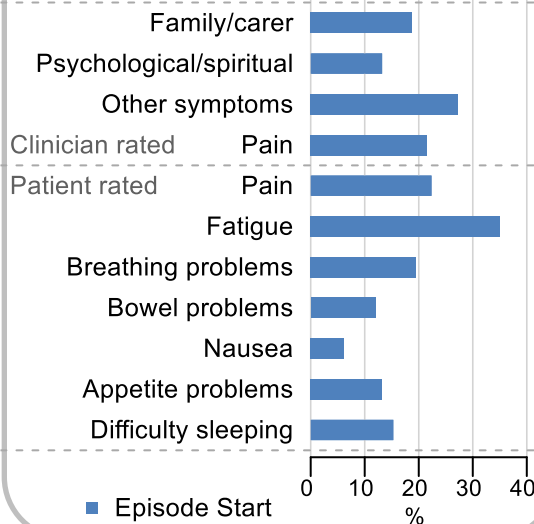


Age at episode start

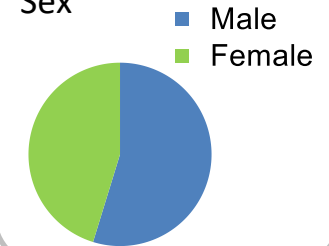
Mean: **74.1**
Median: **75.0**

Symptoms & problems

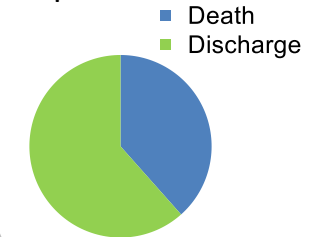
proportion of moderate / severe scores



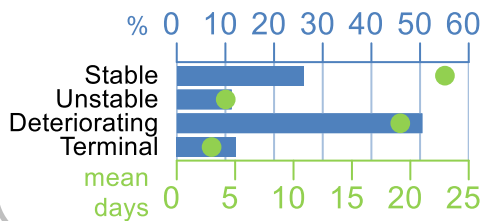
Sex



Episode end



Phase % and mean length in days

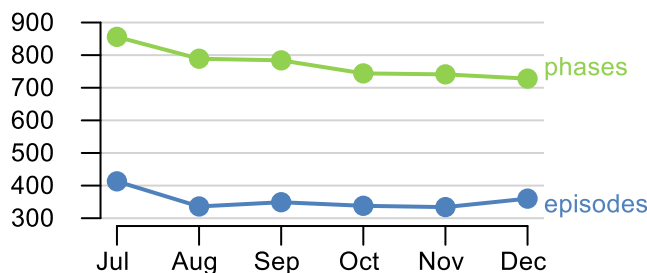


Phases per episode

2.0

Volume of data

Patients: **2,166**
Episodes: **2,406**
Phases: **4,642**



Episode length in days

Mean: **40.8**
Median: **29.0**

