

Patient outcomes

	✓	N	Result
Date ready for care to episode start			
Day of/day after	4293	4530	94.8%
Time in unstable phase			
Three days or less	1095	1171	93.5%

Symptoms & problems

Anticipatory Care

Pain PCPSS	5629	6102	92.2%
Pain SAS	5174	5697	90.8%
Fatigue	5442	5863	92.8%
Breathing problems	6218	6447	96.4%
Family/carer	4123	4403	93.6%

Responsive Care

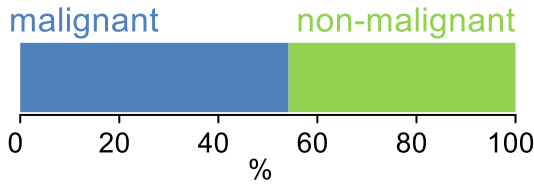
Pain PCPSS	889	1373	64.7%
Pain SAS	972	1680	57.9%
Fatigue	837	1503	55.7%
Breathing problems	505	931	54.2%
Family/carer	447	745	60.0%

Casemix adjusted outcomes

Pain PCPSS	7475	0.12
Other symptoms	7470	0.28
Family/carer	5148	0.24
Psychological/spiritual	7407	0.23
Pain SAS	7377	0.31
Nausea	7375	0.21
Breathing problems	7378	0.35
Bowel problems	7363	0.28

✓ = Positive outcomes N = Total outcomes

Diagnosis

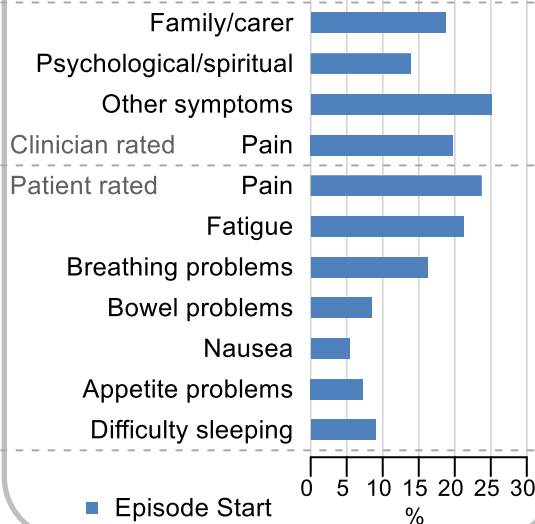


Age at episode start

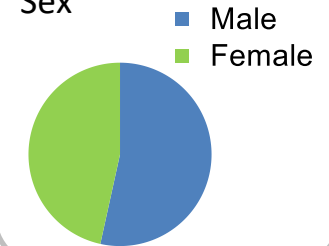
Mean: **75.7**
Median: **77.0**

Symptoms & problems

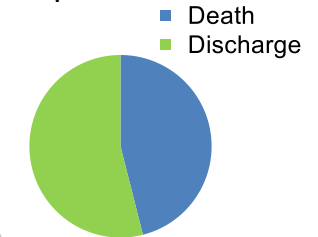
proportion of moderate / severe scores



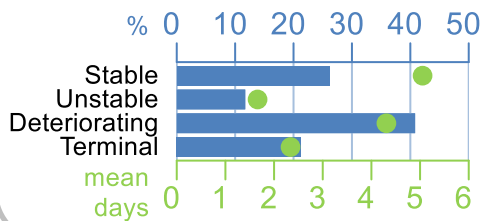
Sex



Episode end



Phase % and mean length in days

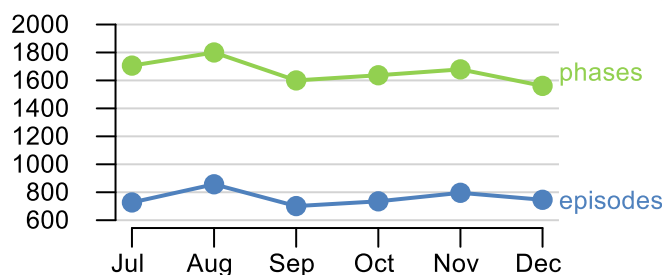


Phases per episode

2.1

Volume of data

Patients: **3,939**
Episodes: **4,643**
Phases: **9,983**



Episode length in days

Mean: **8.1**
Median: **4.0**

